

# Hawaii Kotohira Jinsha • Hawaii Dazaifu Tenmangu



The annual blessing of Hanayagi Dancing Academy Hawaii Foundation (HDAHF) was performed on March 9. Mahalo to HDAHF for preserving and maintaining a strong connection o our cultural heritage, ensuring the continuity of Japanese traditions and values.

Junka Bringas	Steve Miwa
Kira Chapman	Shinken & Marilyn Naitoh
Bradford Chun	Nihon Ryogaku K.K.
Kay Cochran	Craig & Diane Nishida
Bill & Keiko Doughty	Isaac Peters
Hiroto Fujimoto	Charlene Sano
Bryson & Reiko Goda	Wade & Jennifer Sano
Hanayagi Dancing Academy	Akiko Sanai
Hawaii Foundation (HDAHF)	Yumi Shimada
HDAHF Natori Instructors	Gary & Linda Shinsato
Art Isa	Emi Silva
Arthur & Becky Isa	Robert Stallings
Rodney & Sharon Isa	Irene Takizawa
David & Masako Jimenez	Akiko Takumi
James & Melba Kurashige	Naomi Teramoto
Gary Lee	Shiho Wamura
Yae Miko	

## APRIL

- 13 10 am**  
Cleanup and preparations for Spring Fest
- 14 2 pm**  
Spring Thanksgiving Festival
- 3 pm**  
Scholarship Awards

## MAY

- 5 2 pm**  
Tsukinamisai Monthly Service
- 24 8 am (INTERNAL)**  
Memorial Day Service  
(Punchbowl, Makiki & Moiliili Cemeteries)



# GOKITO Private Blessings



Congratulations on the birth of your precious little girl !!!

May her beautiful smile make your world a little brighter everyday!

Traditional Baby blessings are performed at 31 or 32 days for boys and 32 or 33 days for girls.



A long distance blessing was performed for a person about to undergo surgery



Yakudoshi blessings were performed for several people welcoming their Yakudoshi birthdays. May 2024 bring you all the success and fulfillment your heart desires





*Shunbun no Hi* or the Spring (Vernal) Equinox is traditionally a day to honor your departed loved ones.

In Japan, many families visit graves and have Remembrance services at shrines and temples.

Here at the shrine, a ceremony was conducted for former Board members and friends whose *Reiji* tablets are interred at the shrine.



Worldwide, approximately 1.9 million people died in road traffic deaths in 2023.

Driving is the most dangerous thing we do on a daily basis, and it has the highest cost as well.

In Shinto it is customary to bless cars and other modes of transportation so we are preserved against harm to arrive safely at our destinations.



An *Anzan Kigan* or Safe Delivery Blessing was performed on 2/23.

One of the 7 shrines here, is *Suitengu* of Kurume, Fukuoka which has been revered for centuries as the *kami* of conception and safe delivery.

*Kurume* is the head shrine of the 27 *Suitengu* shrines throughout Japan.

Wishing the both of you all the best during this special time in your lives!!

Back-To-School Blessing August 6 Sunday 9:30 am - 1 pm

# Gokito Private Blessings



E Komo Mai!

Twenty members headed by Reverend Hiroto Fujimoto of the *Nihon Ryogoku Kabushiki Kaisha* visited the shrine for a *Seishiki Sanpai* ceremony.

The company based in Tokyo, conducts programs in the areas of Arts and Cultural Exchange, Japanese language education and the visits and research of domestic and international Shinto studies.



Dolls have a special place in Japanese culture. *Ningyo* or doll in Japanese literally means "human form." Dolls like Girls Day dolls are often treated like family treasures and thought to be imbued with a soul.

As such, disposing of them can be very difficult, with many unable to discard them as trash. Some even believe there will be spiritual repercussions if they do not part with them in a dignified way.

*Ningyo Kiyobarai* was performed on 2/27 to thank the dolls for their companionship, happy memories and blessed so they can be ritually burned.

Chinowa for People & Pets - June 2 Sunday 9:30 am - 1 pm

# Sake Appreciation Festival

Sake, a byproduct of rice has long been a vital part of Japanese culture and has an important place at festivals, ceremonies and rituals.

Sake was brewed and imbibed with the *kami* as a sign of gratitude and respect.

The shrine's annual Sake Appreciation Festival was held on March 5.



## MAHALO for your donations of Sake

Bryson & Reiko Goda  
Art Isa

KSK Hawaii  
Mike Lee

Shinken & Marilyn Naitoh  
Craig & Diane Nishida

Gary & Linda Shinsato  
Naomi Teramoto



The Red Spineless Pineapple is a Bromeliad, native to South America and is related to the edible pineapple but is grown for decorative purposes and not intended for human or animal consumption.

The shrine's Red Spineless Pineapple's leaves are starting to turn bright red, adding some brilliant, festive colors in the yard.

Like us on Facebook





16 years ago, the area in front of the shrine was deemed a 5-minute Loading Zone for preschool drop offs Monday - Friday, between the hours of 6:30 am - 8:30 am.

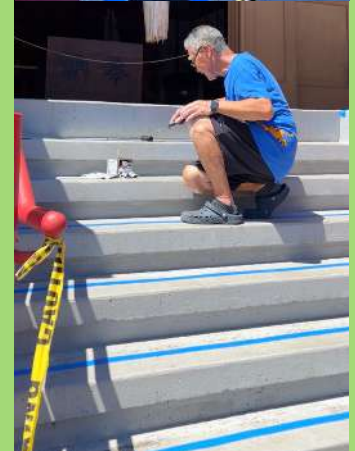
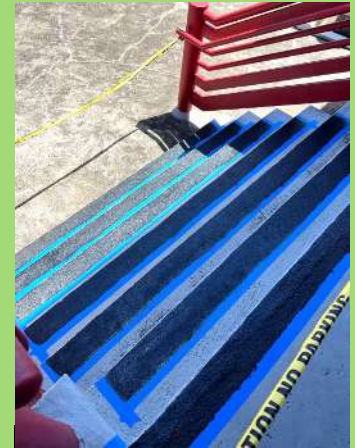
In 2021, a hurricane knocked down the two signs that marked the loading zone.

The signs were finally replaced on 3/12!  
Mahalo State DOT.

Longer days filled with sunlight can trigger the urge to take on some annual tune-ups to the shrine - seeking out vulnerabilities and taking care of anything that could cause problems.

Both steps were sanded and restored to a smooth finish then masked off with tape.

An undercoat was applied to the clean surface followed by Non-skid paint with additive powder. The project was finished with a topcoat and left to cure for 24 hours.



# MAINTENANCE



The hall's french doors allows natural light to pour in and opens it up to the patio area during Hatsumode.

However, the delicate locking mechanisms make them a common target to strong winds.



Mahalo Mike Lee - for repairing and reinforcing the doors, adding an extra layer of protection and security.

The aging parts were replaced, making them stronger and more resistant to high winds and break-ins.



The whiskers of the giant Maneki neko fell off sometime during Hatsumode.

Rev. Takizawa stretched out some thick fishing *suji* on a clothes rack for about 2 weeks, cut them, pierced tiny holes into



the Maneki neko's cheeks and embedded the new whiskers into the holes.

The 70-year old Maneki neko can now continue to beckon positive energies.